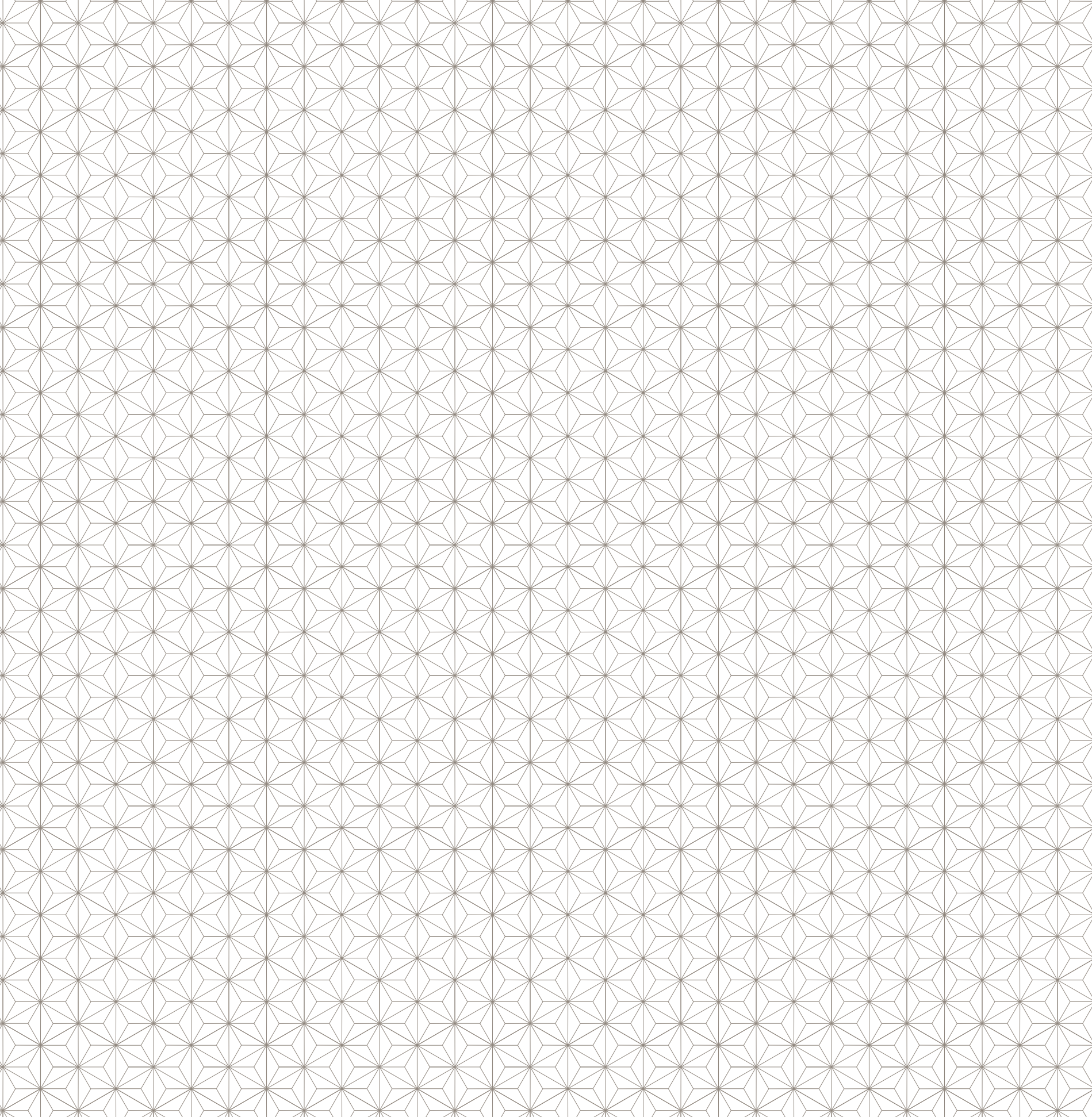




SONITE
TREND PALETTE



Since the day we opened our doors we fought the general perception of what a tile or mosaic should be. We overpassed the limits in colors and shapes, lowered the weight of construction materials and set new standards on carbon-footprint in the design industry.

We are idealists and, also, mosaic lovers.

This passion led us to create the biggest range of possibilities in the creation of mosaic designs. Not counting our Bespoke division, we have more than 200.000 possibilities in our catalog. Intuition might say that this number of possibilities would be in conflict with a fast, streamlined and budget-realistic service.

Nothing is further from reality.

This Trend Palette displays more than a hundred and thirteen proposals, ready to ship anywhere in the world within less than a week's time.

You just take care of expressing your imagination, we take care about the rest.



20S-946 Rattana 2



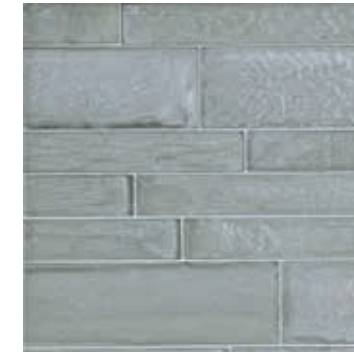
20S-946 Kannika S



20S-946 Morning Lotus



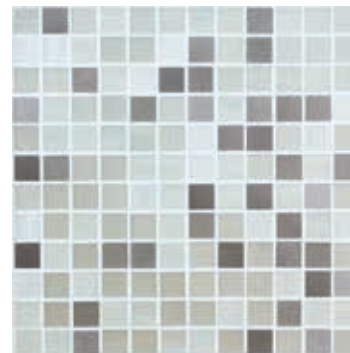
TLS-071 + TLS-905 Bamboo 735



1LS-905 Bamboo L



60S-917 + 11S-905 Gallone



TLS-071(70%) + MLS-946(30%) Grid 15



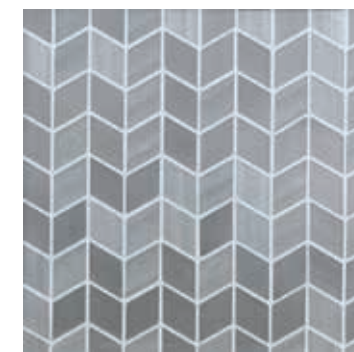
1LS-071 + 11S-905 Polaris



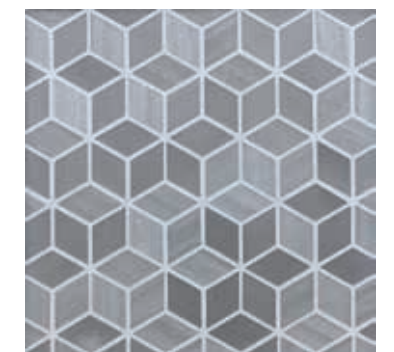
60S-917 Polaris



TLS-905 Equinox



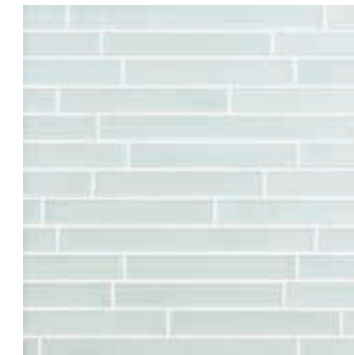
TLS-905 Chevron



TLS-905 Cosmos



60S-023 Gallone



60S-023 Bamboo M



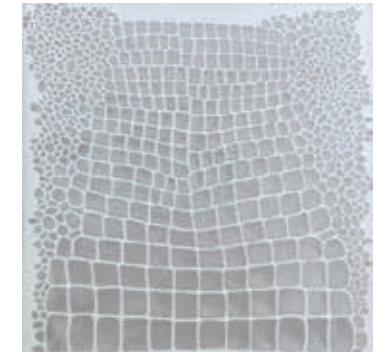
60S-023 Big Cloud



60S-023 + 60S-103 Pleiades



60S-023 + 60S-103 Supernova



11S-619 Nile Croc



TLS-071 Braid 1530



TLS-071 Equinox



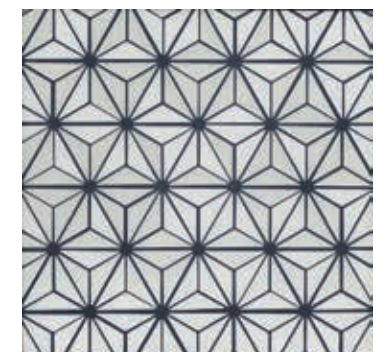
TLS-071 Grid 15



TLS-071 Cosmos



TLS-071 Honeycomb S



TLS-071 Polaris



60S-023 + 20S-800 Ronda



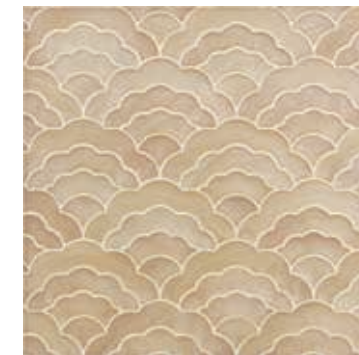
11S-071 + 20S-800 Alhambra



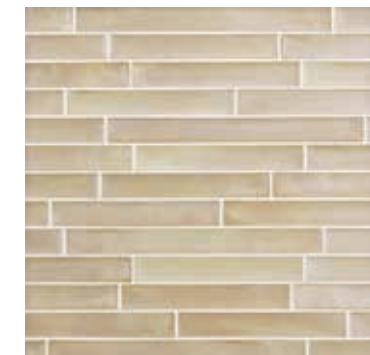
11D-071 + 61D-804 Alhambra



TLS-119 Grid 15



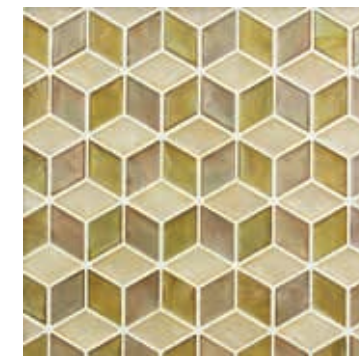
60S-103 Big Cloud



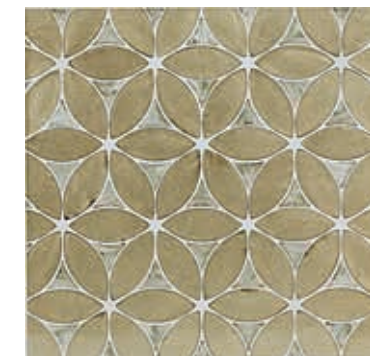
60S-103 Bamboo M



20S-800 + 60S-023 Supernova



60S-103 + 60S-814 + 60S-819 Cosmos



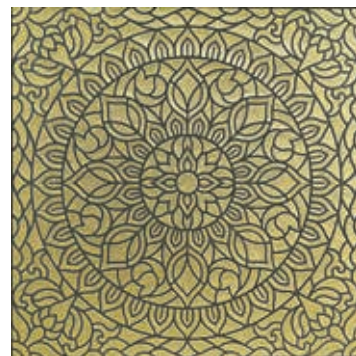
20S-811 + 2LS-946 Pleiades



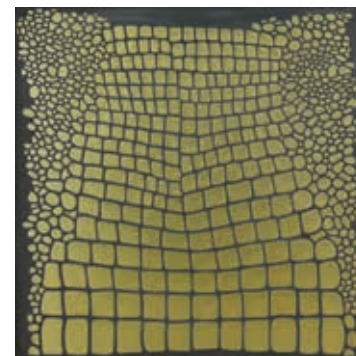
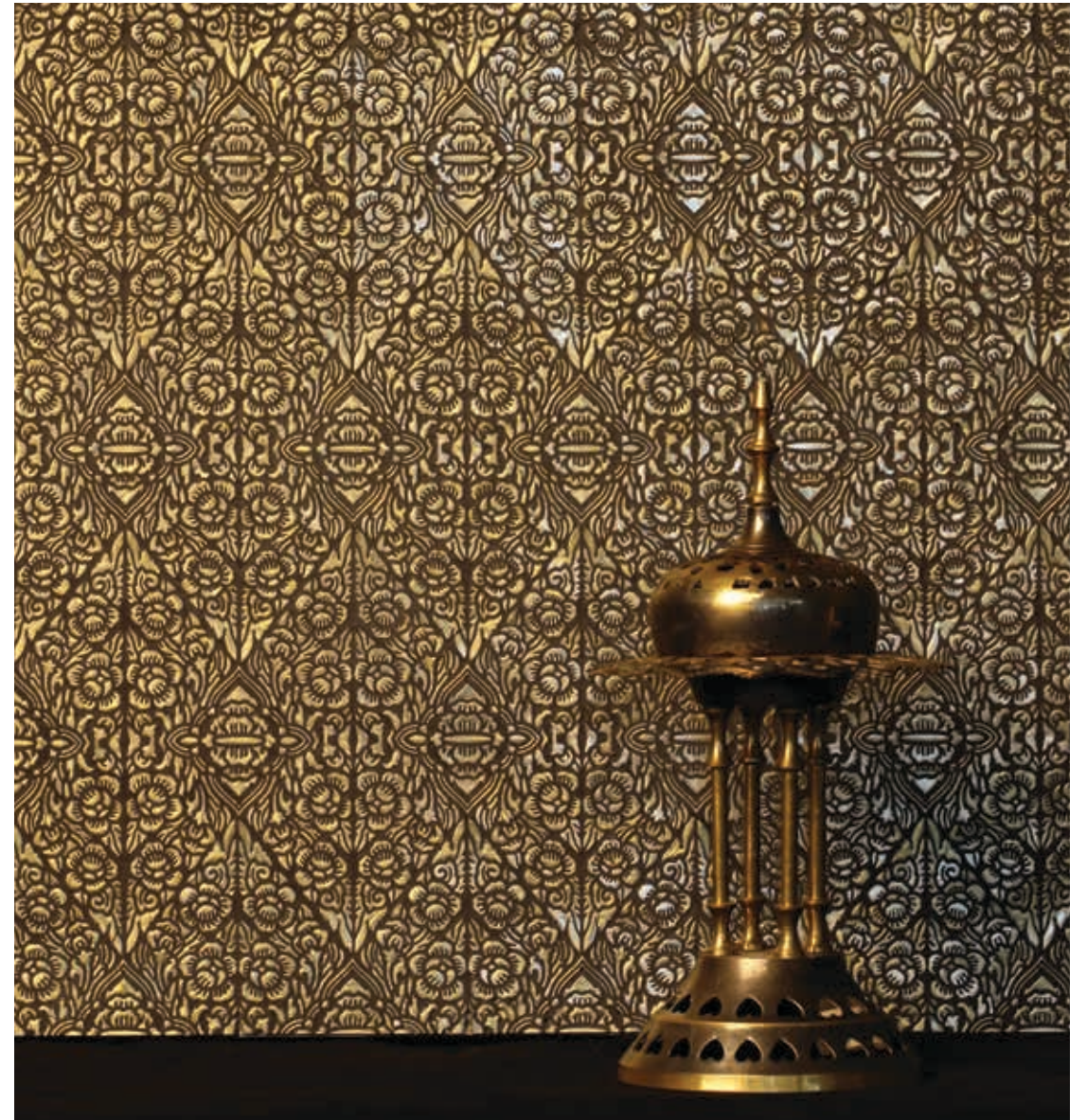
61S-831 Chevron



61S-831 Equinox



20S-800 Morning Lotus



20S-800 Nile Croc



20S-800 Rattana 2



20S-800 Kannika S



20S-807 Morning Lotus



20S-807 Rattana 2



20S-807 Kannika S



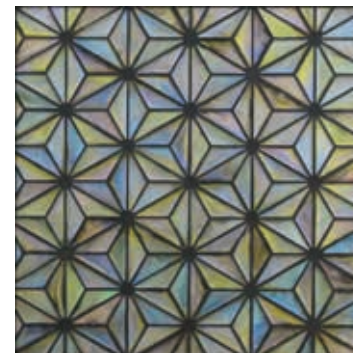
60S-816 + 61S-831 Bamboo M



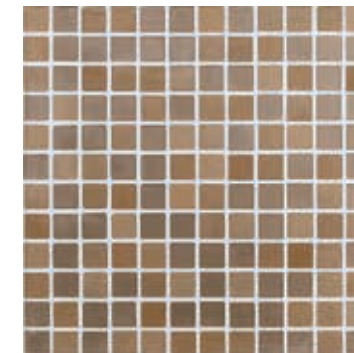
60S-816 + 61S-831 Gallone



60S-816 Bamboo L



60S-816 Polaris



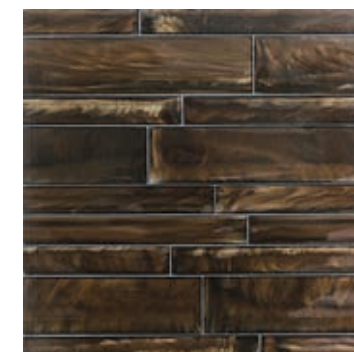
MLS-814 Grid 15



61S-804 Nile Croc



61S-828 Nile Croc



61S-828 Bamboo L



SLS-805 Honeycomb S



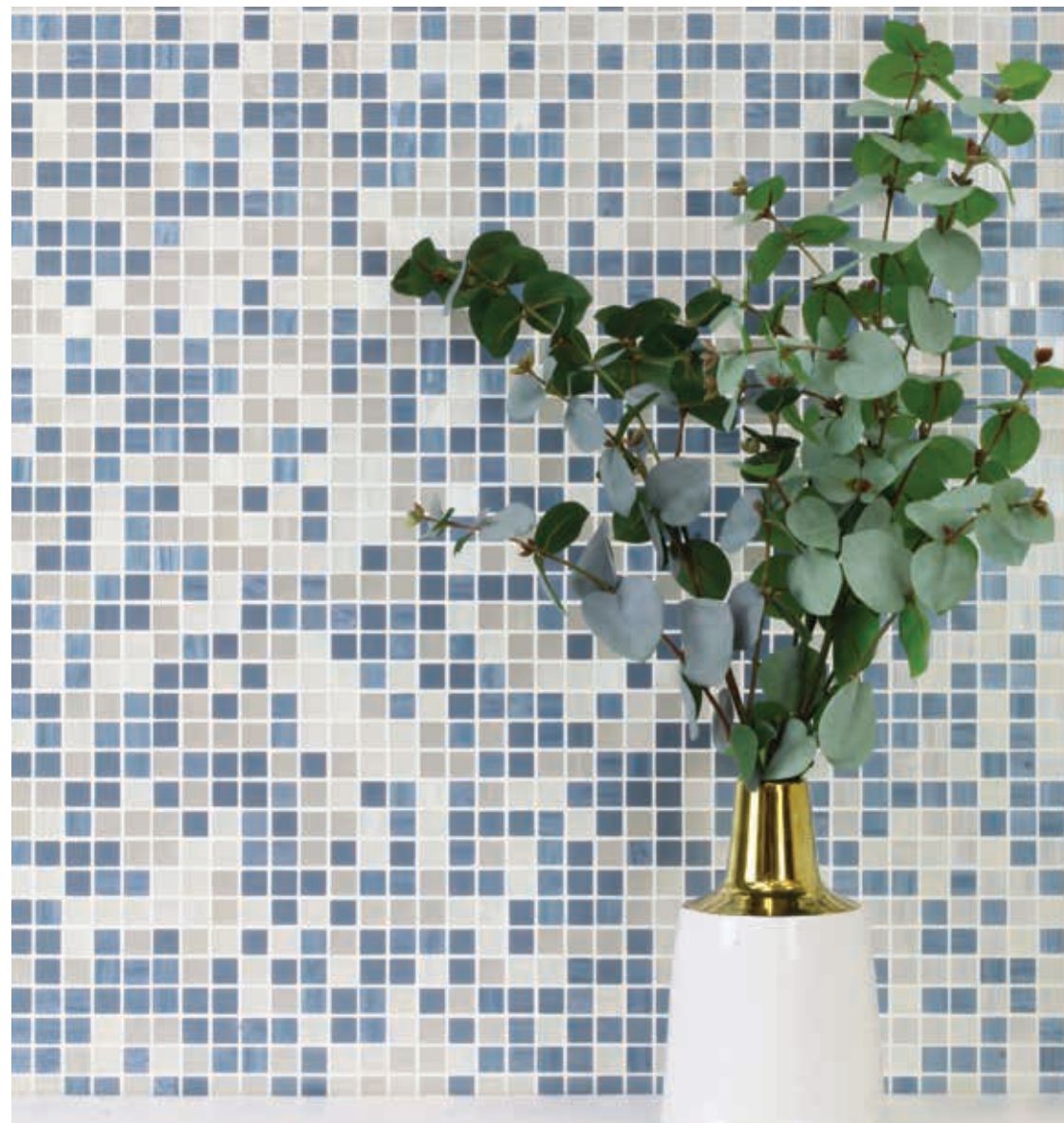
61S-320 + 61S-926 + 11S-825 + 2LS-938 Magnolia



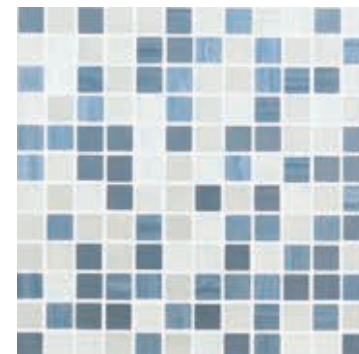
11S-438 + 1LS-908 + 1LS-905 + 60S-023 Magnolia



12D-742 + 20D-946 Alhambra



TLS-071 + TLS-708 Cosmos



TLS-071 + TLS-708 Grid 15



TLS-071 + TLS-708 Chevron



TLS-071 + TLS-708 Honeycomb S



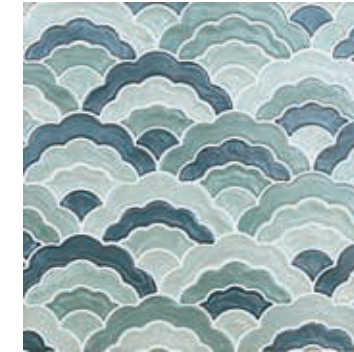
TLS-071 + TLS-708 Bamboo 735



TLS-071 + TLS-708 Equinox



60S-917 + 60S-023 + 60S-925 + 11S-502 Magnolia



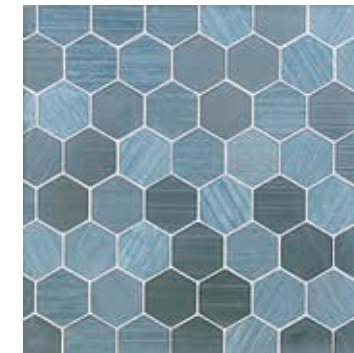
11S-501 + 11S-502 + 11S-505 + 11S-708 Big cloud



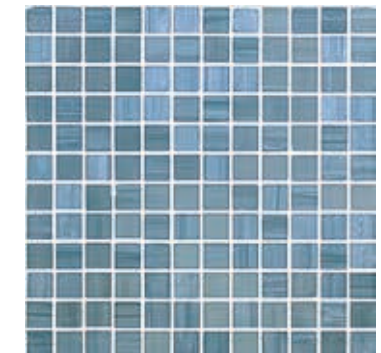
TLS-708 Equinox



TLS-708 Braid 1530



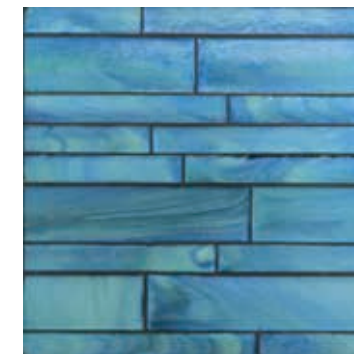
TLS-708 Honeycomb S



TLS-708 Grid 15



60S-554 + 60S-023 Pleiades



60S-554 Bamboo L



60S-554 Bamboo M



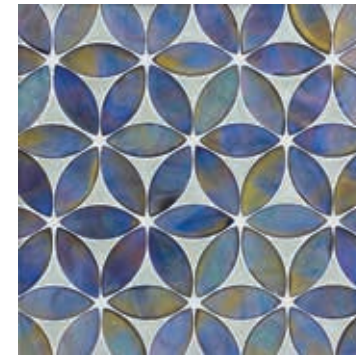
TLS-708 Chevron



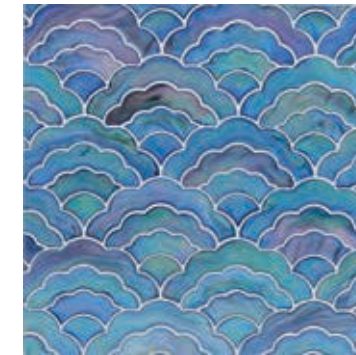
TLS-708 Bamboo 735



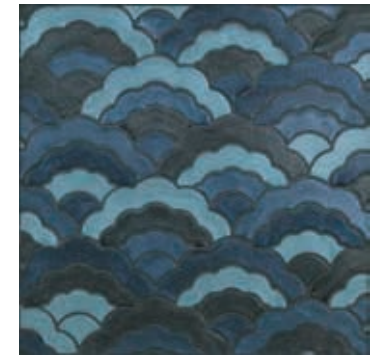
60S-411 + 61S-504 + 1LS-549 + 1LS-799 Magnolia



60S-816 + 11S-071 Pleiades



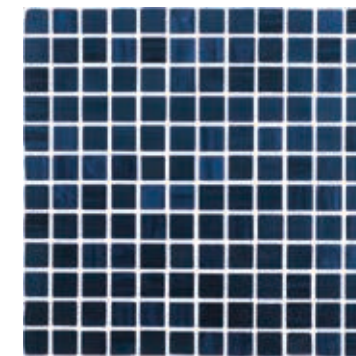
60S-764 Big cloud



42S-723 + 42S-512 + 42S-714 + 42S-906 Big cloud



60S-023 + SLS-702 Supernova



SLS-702 Grid 15



12S-702 Supernova



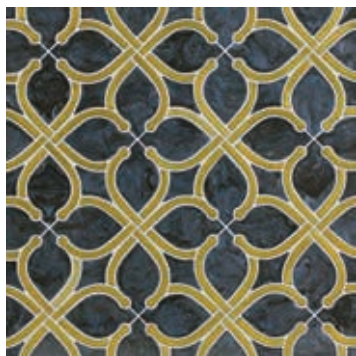
11S-501 + 1LS-819 + 60S-995 + 61S-625 Magnolia



61S-926 + 20S-800 Alhambra



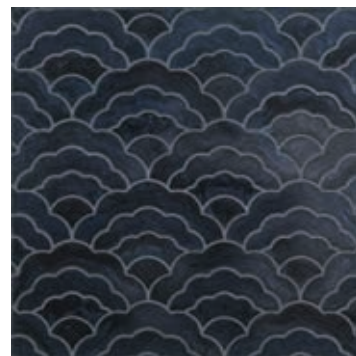
61S-926 Bamboo L



1LS-719 + 20S-800 Ronda



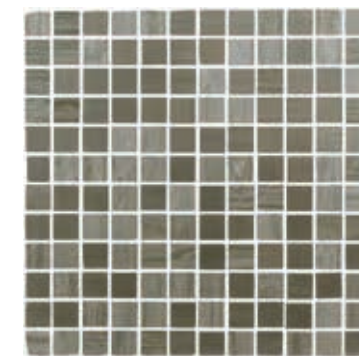
1LS-719 + 1LS-799 Gallone



1LS-799 Big cloud



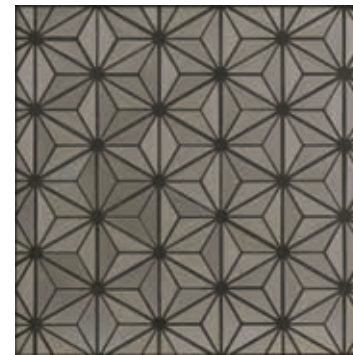
61S-926 + 20S-800 Ronda



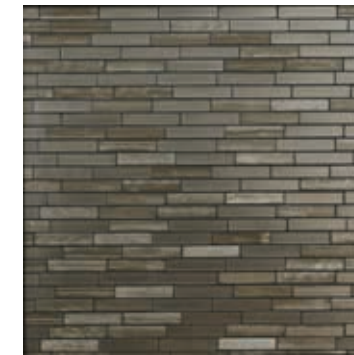
TLS-908 Grid 15



TLS-908 Braid 1530



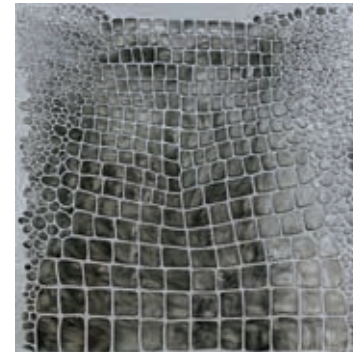
TLS-908 Polaris



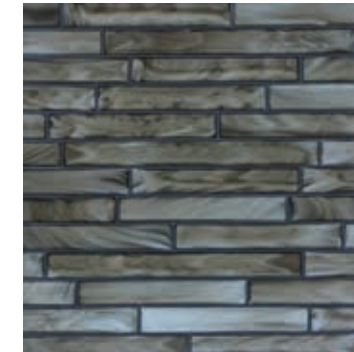
TLS-908 Bamboo 735



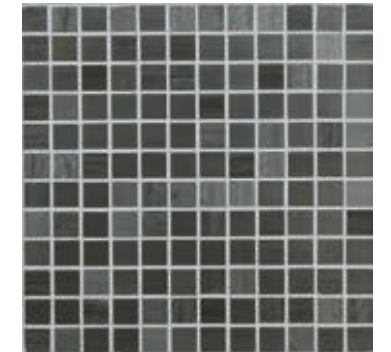
TLS-908 Honeycomb S



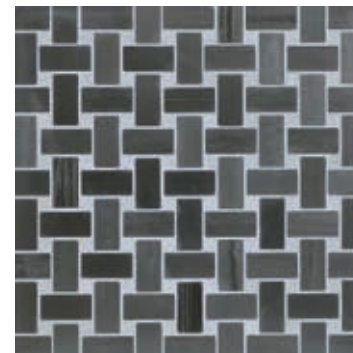
61S-927 Nile Croc



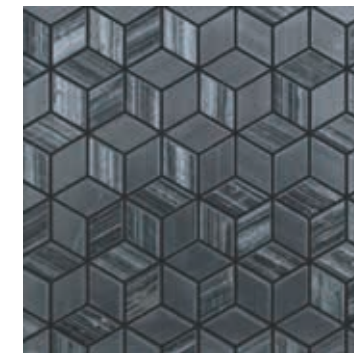
61S-927 Bamboo M



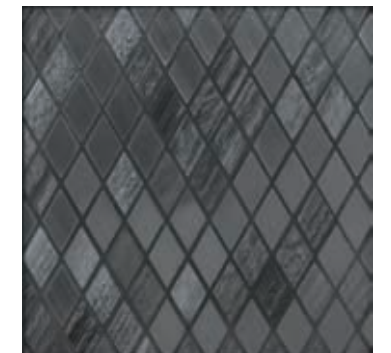
TLS-909 Grid 15



TLS-909 Braid 1530



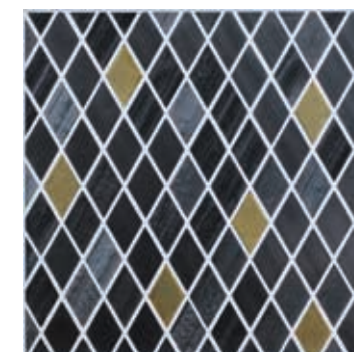
TLS-909 Cosmos



TLS-909 Equinox



TLS-909 Chevron



TLS-909(95%) + 20S-800(5%) Equinox



11S-909 + 20S-800 Alhambra



20S-924 Morning Lotus



20S-924 Kannika S



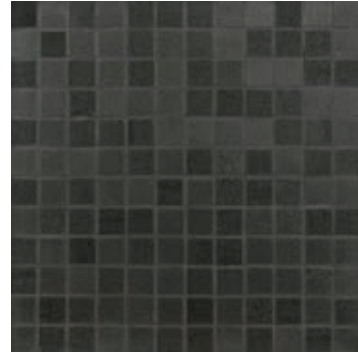
20S-924 Rattana 2



60S-023 + 61S-920 Supernova



1LS-904 + 1LS-799 Ronda



MLS-966 Grid 15



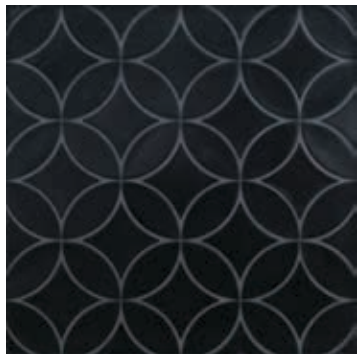
20S-966 Morning Lotus



20S-966 Kannika S



20S-966 Rattana 2



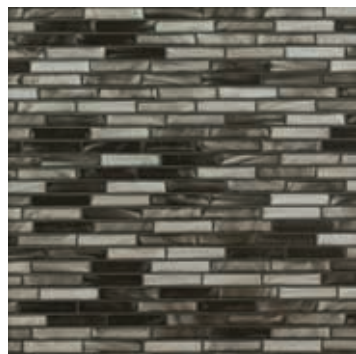
11S-967 Supernova



QLS-997 Honeycomb S



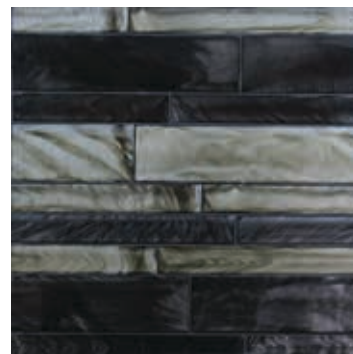




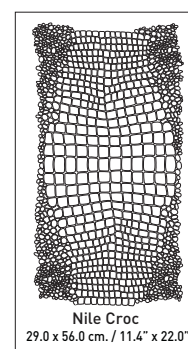
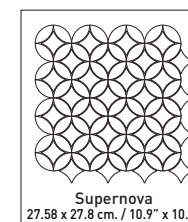
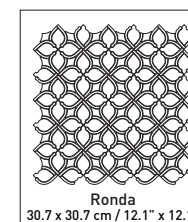
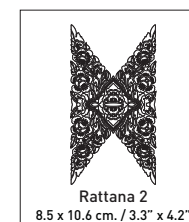
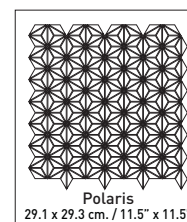
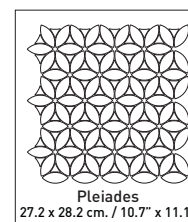
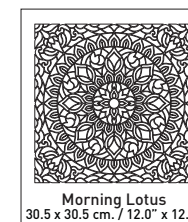
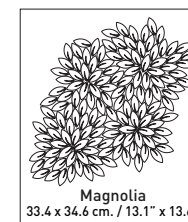
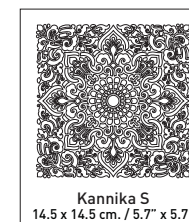
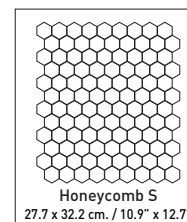
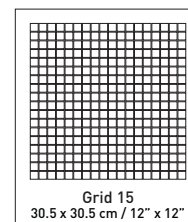
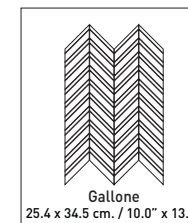
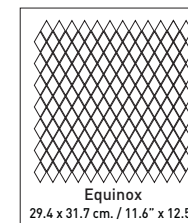
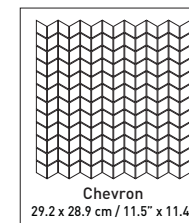
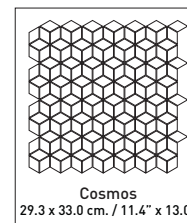
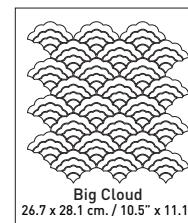
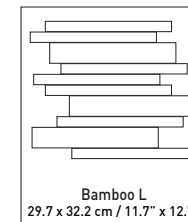
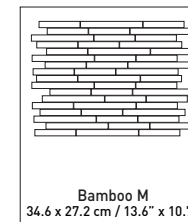
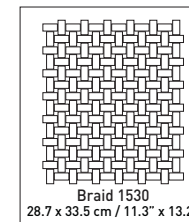
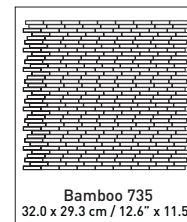
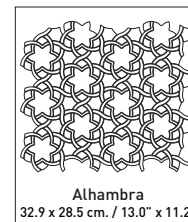
61S-926 + 61S-927 + 61S-920 Bamboo 735



61S-918 Bamboo M



61S-918 + 61S-927 Bamboo L



PRODUCT TESTING RESULTS

Technical Characteristics	Results	Test Method
Chemical resistance	Class A	ASTM C650
Stain resistance	Class A	ASTM C1378
Bond strength**	Average PSI 318	ASTM C482*Modified
Water absorption	Less than 3.0%	ASTM C373
Corrected Static coefficient of friction test - Dry* (after cleaning with Hillyard Renovator)	≥ 0.9 -	ASTM C1028
Corrected Static coefficient of friction test - Wet* (after cleaning with Hillyard Renovator)	≥ 0.7 -	ASTM C1028
Robinson Floor Test***	> Moderate -	ASTM C627
Surface Burning Characteristics*	Class B	ASTM E84

Technical characteristics provided are merely general guidelines. And may vary from pattern to pattern. They are not instructions for any particular use in any particular location
 Based on 15 x 15 mm. mosaics size. Test result are guidelines only
 **Using Thin-set : 254 Platinum Laticrete, Thin-Set Mortar (White)
 Grouted with : Mapei Koracolor Unsanded Grout with Polymer
 *** Based on 10x10 mm. mosaics size. Test result are guidelines only.

General Information

Sonite products must be kept away from high heat and fires, including direct sunlight and open flames. Do not set curling irons, blow dryers, clothing irons, or other hot objects directly on the surface of the product. For best results, the surface area to be covered should be completely flat and smooth, with all corners perpendicular.

Sonite products

Differences and variations in shade, flow, grain, tonality, shape, size, veining, moisture absorption, surface finish, color (including discoloration and/or fading, and/or yellowing over time), texture, and coefficient of friction are inherent characteristics and/or occur naturally during the manufacturing process and are not, and shall not be considered, defects in the Sonite products.

Application

Please refer to any relevant technical specifications to determine whether a collection is appropriate for an application. Any specifications or guidelines provided by Sonite are merely general guidelines. They are not instructions for any particular use in any particular location.

Sonite products are primarily intended for use as indoor

decorative wall coverings. Sonite mosaics (10, 15, 20 mm.) are rated for light traffic flooring use only if installed with epoxy based adhesive and non-sanded grout. White colored adhesives are recommended for use with translucent Sonite materials to prevent color drops.

BUYER ACKNOWLEDGES THAT SONITE PRODUCTS MUST BE KEPT AWAY FROM HIGH HEAT (SONITE PRODUCTS ARE NOT INTENDED TO WITHSTAND TEMPERATURES IN EXCESS OF 110° C (230°F) AND/OR FIRES.

Sonite products are rated for use in steam rooms with operating temperatures less than 80° C (176° F) and for wet application (showers baths, and indoor pools). Epoxy based adhesives and grout are required for installation in steam rooms and wet environments.

Sonite recommends Laticrete 254 platinum, Weber fix plus, and Weber epoxy that have been tested and approved for normal application with Sonite products. For applications with large ambient temperature variation or light traffic floor applications, epoxy based adhesives and grout are recommended.

We believe that the information in this catalog is reliable and offer the information in good faith without guarantee, as conditions and methods of use are beyond our control. We recommend prospective buyers perform their own testing to determine product suitability for all purposes before adopting Sonite on a commercial or residential scale. In no case is Sonite Innovative Surfaces Co.,Ltd. is liable for direct, consequential, economic, or other damages. Sonite Innovative Surfaces Co.,Ltd. disclaims all other warranties, expressed or implied, including the warranty of merchantability and fitness for a particular purpose.

The data that we have provided is to the best of our knowledge accurate and based on testing for official certifying laboratories. However, each pattern, size and material may be perform differently under different applications and it is up to each customer to determine the suitability of the material for each of their intended application.

NOTHING IN THIS CATALOG SHALL BE CONSTRUED IN ANY WAY TO CONFLICT WITH SONITE'S PRODUCT TESTING RESULTS OF SALE.

Sonite Head Office

Sonite Innovative Surfaces Co., Ltd.
 253/43 Soi Latphrao 80 (Section 22)
 Latphrao Rd., Wangthonglang,
 Bangkok 10310 Thailand

T: +66 2935 5575 (ext.6)
 F: +66 2935 5883

Sonite Main Showroom

Crystal Design Center Building D110
 1420 Soi Latphrao 87 (Chantrasuk)
 Praditmanutham Rd., Klongjun
 Bangkok, Bangkok 10240 Thailand

T: +66 2012 2015; +66 2102 2107
 F: +66 2102 2106

Sonite North America

Sonite Innovative Surfaces
 Marketing Office
 865 Production Place
 Newport Beach, CA - 92663 USA.

T: +1 949 612 7173
 F: +1 949 612 7194

info@sonitesurfaces.com
www.sonitesurfaces.com



sonitesurfaces.com